

### CLINIC SERVICE SINK

- Vitreous china
- Floor mount or installed on a pedestal base (as shown) pedestal base must be ordered separately
- Flushing rim
- Siphon jet flushing action
- 1-1/2" brass top spud
- Bolt caps
- White Only

9504999.020 Service sink

#### Available Components:

710098-201.081 Pedestal base, black on white finish

7832504.075 Rim guard \*

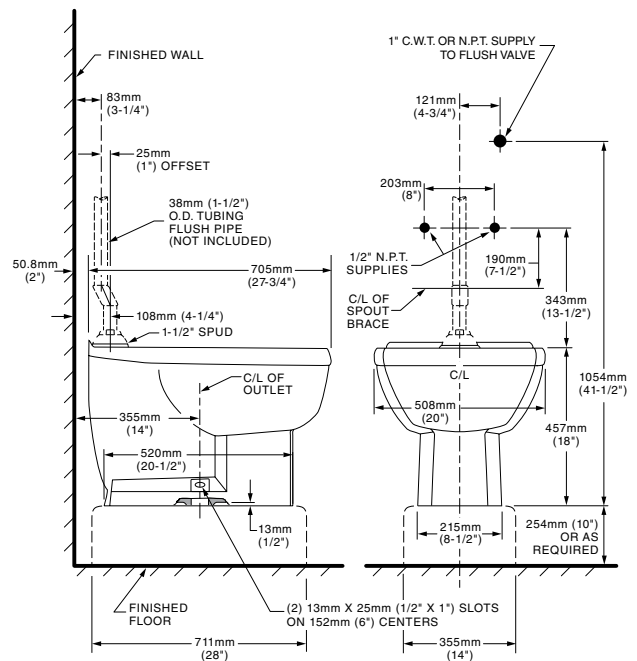
#### Nominal Dimensions:

743 x 508 x 457mm

(29-1/4" x 20" x 18")

#### NOTES:

- \*  Optional one, two or three rim guards available when specified and ordered accordingly (not shown)
- Optional pedestal base (approximately 28" x 14" x 10" - 711 x 355 x 254mm) available when specified and ordered accordingly (as shown)
- For efficient operation of the sink, a minimum flowing water pressure of 25 PSI is required at the valve.
- 5.4 gpf/24.6 lpf Flush valve is require for best performance Flush Valve supplied by others.
- Fixture conforms to ANSI/ASME A112.19.2M standards IAPMO (cUPC)



FLUSH PIPE NOT INCLUDED

**IMPORTANT:** Roughing-in dimensions may vary 1/2" (13mm) and are subject to change or cancellation without prior notice. No responsibility is assumed for use of superseded or voided leaflets.